



TOGETHER, WE DELIVER



2025-26 IMPACT & OUTLOOK

FROM VOLUNTEER TO CLIENT: GERALD'S JOURNEY



Gerald Schmoyer opened his door for a meal delivery, grinning and eager to show off his Meals on Wheels tie-dye shirt. “I have a whole stack of these,” he laughed. “I earned each one.” In the 1980s and 90s, his wife Betty Jane worked as a cook in our kitchen while Gerald volunteered whenever building or facility help was needed.

After retiring in 2004, Gerald and Betty Jane began delivering meals together. He drove while she brought meals to the door. More than once, their attentiveness helped identify a fall, an illness, or another immediate need. Now, Betty Jane attends a daily senior center, and Gerald receives his own Meals on Wheels delivery. He says having a hot, nutritious meal delivered daily helps keep him healthy so he can care for Betty Jane. From volunteering to receiving meals, he understands the vital impact of this support—from both sides of that knock on a door.

DELIVERY VOLUNTEERS ARE TRAINED TO BE OBSERVANT.

If a client doesn't answer the door, they alert staff to share any concerns, and call 911 when someone needs help.

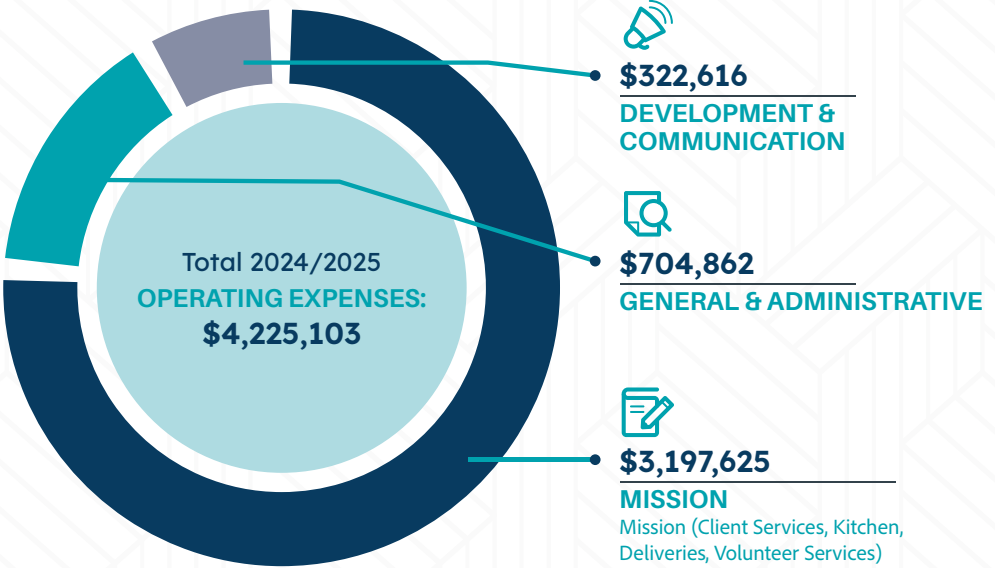


FOR MANY CLIENTS, a Meals on Wheels volunteer is the only person they'll see all day. They are each a smiling lifeline, one door at a time.

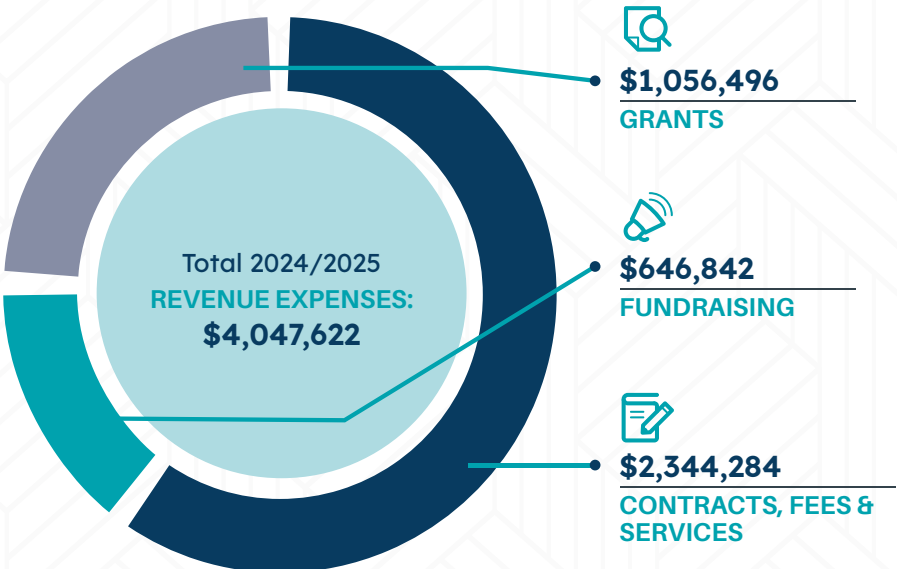
BY THE NUMBERS: A YEAR OF IMPACT

2024/2025 OPERATING EXPENSES:

While revenue sources declined, local philanthropy increased our funding to help us continue delivering meals and connections to nearly 2,000 neighbors in need.



2024/2025 OPERATING REVENUE:



BEYOND DELIVERY: THE IMPACT OF CONNECTION AND CARE

Friends and Partners,

When you think about Meals on Wheels, it's easy to focus on the nutritious food carefully prepared and delivered to those in need, yet we touch lives in ways that extend well beyond food.

Relationships are at the heart of all we do. Volunteers provide quality nutrition and a friendly safety check for clients, from age 19 to 107, in a respectful way that saves lives and lifts spirits.

When you support Meals on Wheels, you strengthen the fabric of our community, one doorbell and relationship at a time.



THE 2024-25 NUMBERS TELL AN IMPRESSIVE STORY
330,465 meals delivered to **2,000 seniors and adults**
with disabilities handled by **930 volunteers** who drove
363,166 miles.

STAY CONNECTED FOLLOW US ON SOCIAL MEDIA

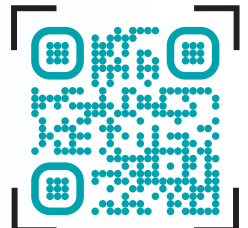
 [mowglv](https://www.facebook.com/mowglv)

 [mealsonwheelsglv](https://www.instagram.com/mealsonwheelsglv)

[mowglv.org](https://www.mowglv.org) | 610.691.1030

Meals on Wheels of the Greater Lehigh Valley
1302 N. Sherman Street Allentown, PA 18109

Scan to learn
more about
our programs
and services



NOURISHING MINDS & HEARTS: THE STORY OF SALLY AND MARLEY



Living with limited mobility and health concerns makes simple tasks difficult for Sally, and her fixed income means the costs of dog food has taken a toll on her limited resources.

Our Ani-Meals clients receive dog or cat food with their meal delivery. Marley, Sally's dog, has a meal delivered just for him.

When the Meals on Wheels volunteer knocks on Sally's door, her face lights up and her beloved Marley's tail wags in enthusiastic agreement.

We support the entire household, including furry family members, serving clients and their beloved companions with food and litter for their cats and dogs. "The volunteers greet both of us and treat Marley like an old friend," Sally explains. "They know he's my companion, my protector, and my reason to get up in the morning."

Her bond with Marley carries her through life's ups and downs, creating a connection that keeps her spirits high. Her human connection with Meals on Wheels provides the peace of mind that comes from knowing someone cares about her and that her cherished companion is cared for, too.



THROUGH OUR ANI-MEALS PROGRAM...

We delivered **643 pet food and litter packages** so clients never have to choose between feeding themselves or their furry companions.

THE RECIPE FOR CARE: FRESH FOOD, THOUGHTFUL PREPARATION, AND COMMUNITY CONNECTION

Early each morning, our kitchen transforms fresh ingredients into thoughtful, personalized meals to meet the unique health needs of nearly 2,000 clients.

Featuring locally sourced produce and careful prep from chopping to plating, Meals on Wheels delivers quality that you can taste.

Ingredients become the nutrition that helps clients maintain health, manage chronic conditions, and live independently at home.

In a highly organized flow, the meals move seamlessly to one of nine convenient pickup locations across Lehigh, Northampton, and southern Carbon Counties.

From there, our volunteers collect meal deliveries and fan out across the region, ensuring fresh, nourishing food reaches our neighbors who depend upon us.

From fresh ingredients to a friendly knock on the door, we deliver hope, health, and dignity, one client at a time.



**330,465 MEALS
WERE SERVED LAST
YEAR** to nearly 2,000
seniors and adults with
disabilities across the
Greater Lehigh Valley.

**EVERY DAY,
DELICIOUS AND
NUTRITIOUS MEALS**
are cooked fresh,
medically tailored,
and delivered hot,
because good food
brings comfort, and
comfort brings peace
of mind.



ROUTES OF COMPASSION: HOW VOLUNTEERS TRANSFORM LIVES

VOLUNTEERS—THE LIFEBLOOD OF MEALS ON WHEELS.

Each week day, 125 volunteers are on the road across 88 delivery routes, picking up from church parking lots and community centers to deliver meals that stay hot.

WE PROVIDE A FRIENDLY FACE, A DAILY CONNECTION, AND PERSONAL CARE TO EACH OF OUR CLIENTS.

What starts with fresh ingredients in the kitchen becomes an impactful moment when a volunteer greets a client.

Some volunteers knew clients who received meals, others deliver with friends and family, and many others simply want to contribute.



WAYS TO GET INVOLVED:



DELIVER meals on weekdays between 10 a.m. and noon, solo or with a partner

RALLY your company, faith community, or service club as a volunteer team

HELP high school students earn community service hours through meal delivery

FOR ADDITIONAL INFORMATION...

Please contact our **Volunteer Services Team** at **610.691.1030** or **volunteer@mowglv.org**

SO, WHAT'S NEXT?

DONATE to help support meal deliveries.

VOLUNTEER as little as once a month.

SHARE our information with those who are homebound due to surgery, illness, a disability, or during family absences.

JOIN our Sustainers Society! Donate as little or as much monthly as you choose!

Spread the word and get involved! Visit www.mowglv.org to get started.

